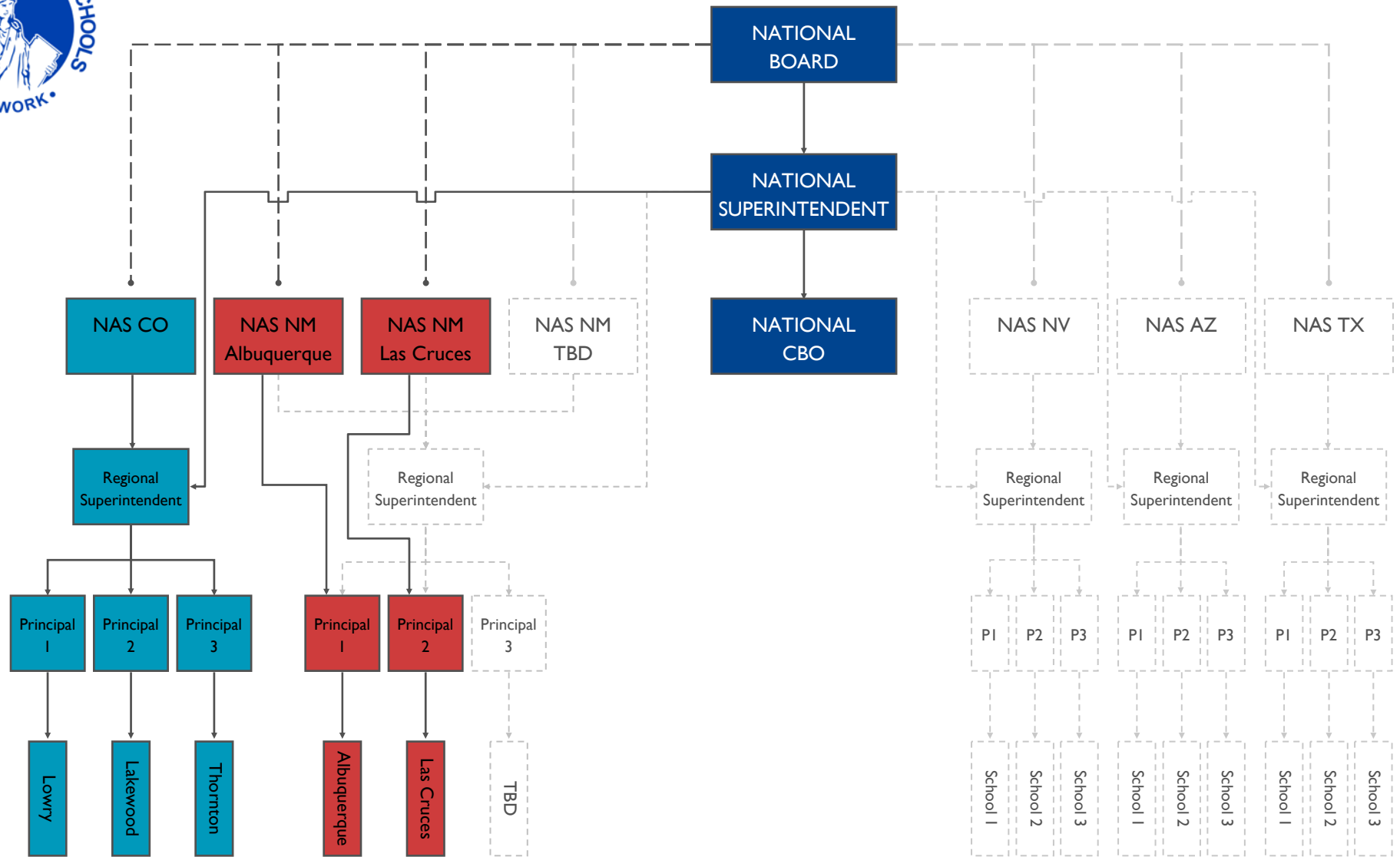




# ORGANIZATION CHART



## ASSUMPTIONS

- (1) Any state with a board can oversee multiple cities—similar to Colorado
- (2) Once a state has three schools, a Regional Superintendent is established
- (3) National Superintendent/CBO provide oversight as specified in the Services Agreement
- (4) All Regional Superintendents report to Regional Boards and are overseen by National Superintendent/CBO

## LEGEND

- Direct reporting relationship
- - -→ Oversight relationship
- ..... Not yet established